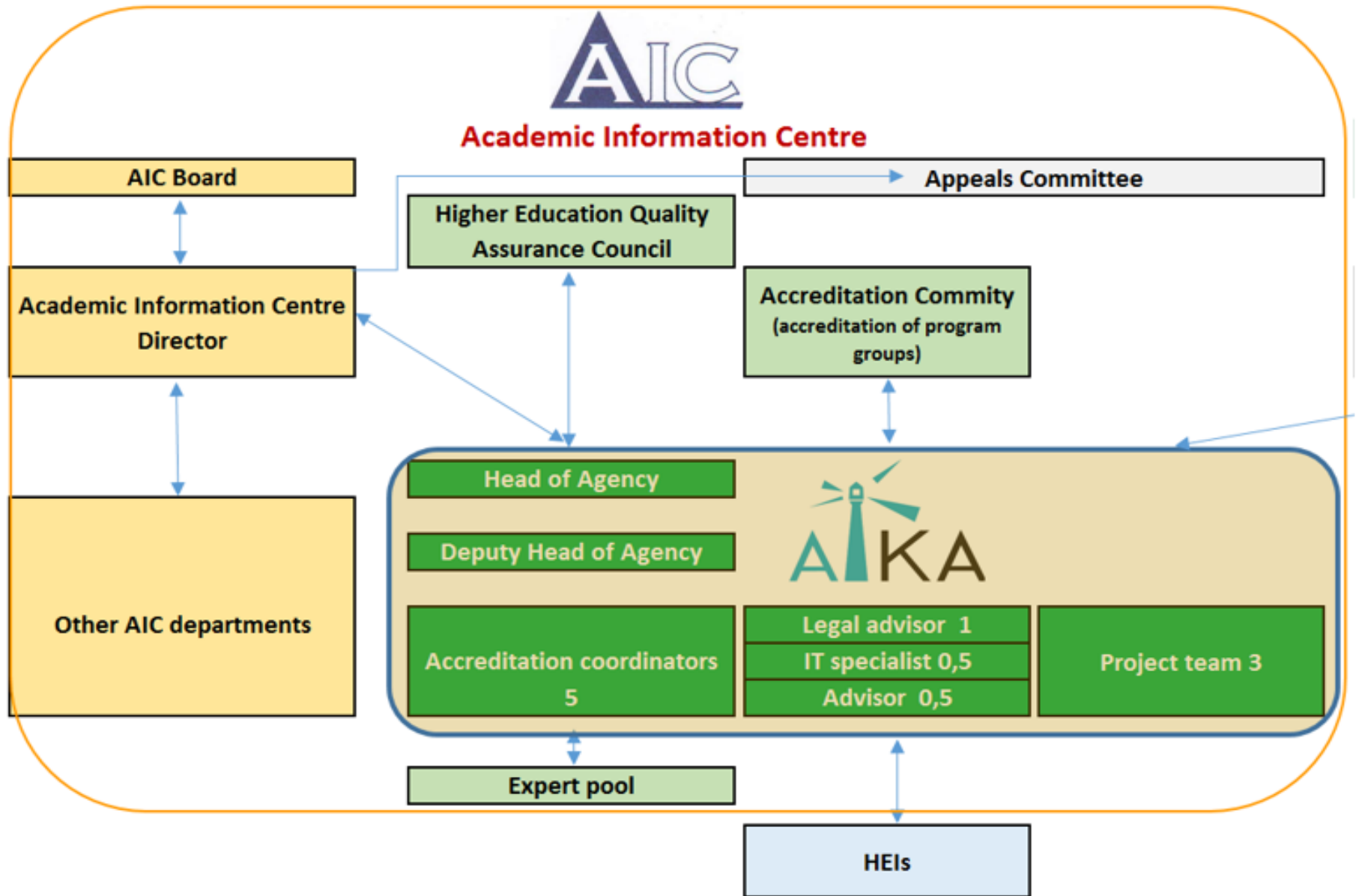




Establishing and quality assurance of joint programmes in Latvia

**Prof. Andrejs Rauhvargers,
Head of Latvian Quality Assurance Agency**

Vilnius_30-31, 2017



Established in April, 2015

New Regulations on in July 2015

Evaluations:

EU funded:

**12 groups of programmes 88 progr.
of them 11 joint progr.**

Regular (by end of 2017)

**10 groups of programmes 41 progr.
estimate 9 joint progr.**

LV requirements to joint programmes (current situation)

- All parts of JP must refer to the same level in Qualification Framework
- JD must be developed jointly by all partner
- Partner HEIs develop jointly agree:
 - access requirements and final requirements;
 - management of the programme,
 - granting degrees;
 - jointly developed a quality assurance system within the joint programme.

External QA: Licence

In Latvia Joint Programmes must receive licence (*ex-ante assessment*):

- Those parts of the JP delivered the Latvian HEI have undergo the Latvian licencing procedure.
- Parts of the JP delivered by foreign partner(s), Latvian HEI should sobmits evidence that the foreign partner(s) institutions (or programmes) are recognised in partner country.

Changes in pipeline

- Parliament has prepared a draft amendment to the Law of HEIs which stipulate that as of 01 Jan 2018 any EQAR agency can operate in Latvia.
- When the above amendments will be approved, the single accreditation approach will be possible

Accreditation

- JP is accredited within accrediting of the «study direction» to which the JP belong. Foreign partner HEIs should submit documents from their relevant QA agencies to provide evidence that the JP is recognised in their countries.
- The parts of the JP delivered by foreign HEI(s) should be recognised according to the legislation of the relevant country(ies).
- Before the final decision on the JP, LV Accreditation Board may contact the QA agency(ies) of partner countries.

Granting and issuing of qualification

- The credentials issued as the result of the JP can be either joint degree, two or multiple degrees or LV national degree alone.
- The entries of the diploma and Diploma Supplement should be issued jointly by partner institutions.

Recognition of parts of programme delivered by foreign HEI

Parts of programmes delivered by foreign partners is recognised in Latvia if they recognised in the country of origin

Thanks for attention

